

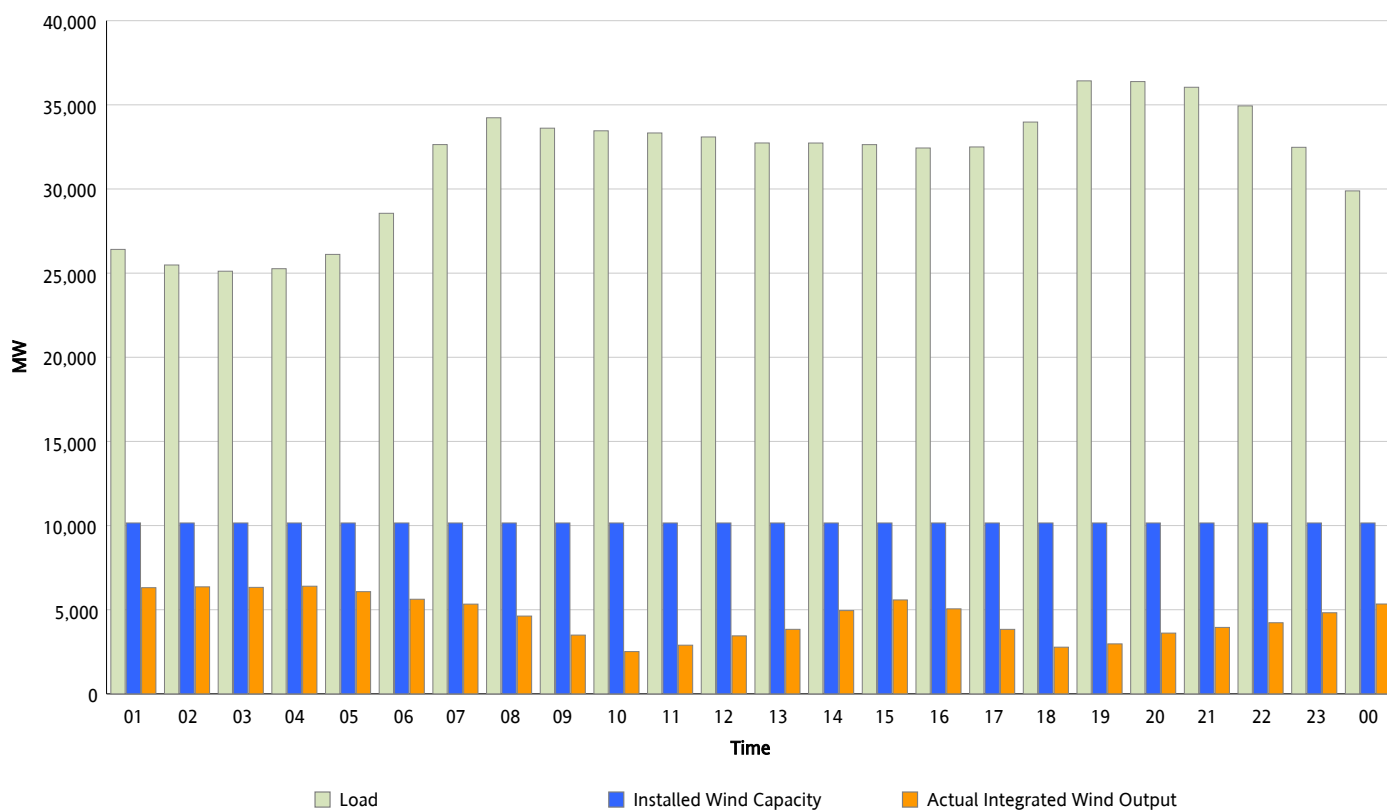


## ERCOT Grid Operations

### Wind Integration Report : 12/17/2012

Peak Load	36,425 MW
Load Peak Hour (HE)	19
Wind Over Peak	2,971 MW
Wind Record 11/10/12	8,521 MW
Max Wind Value*	6,615 MW
Wind Peak Time	03:20
Wind Integration %	26.21 %

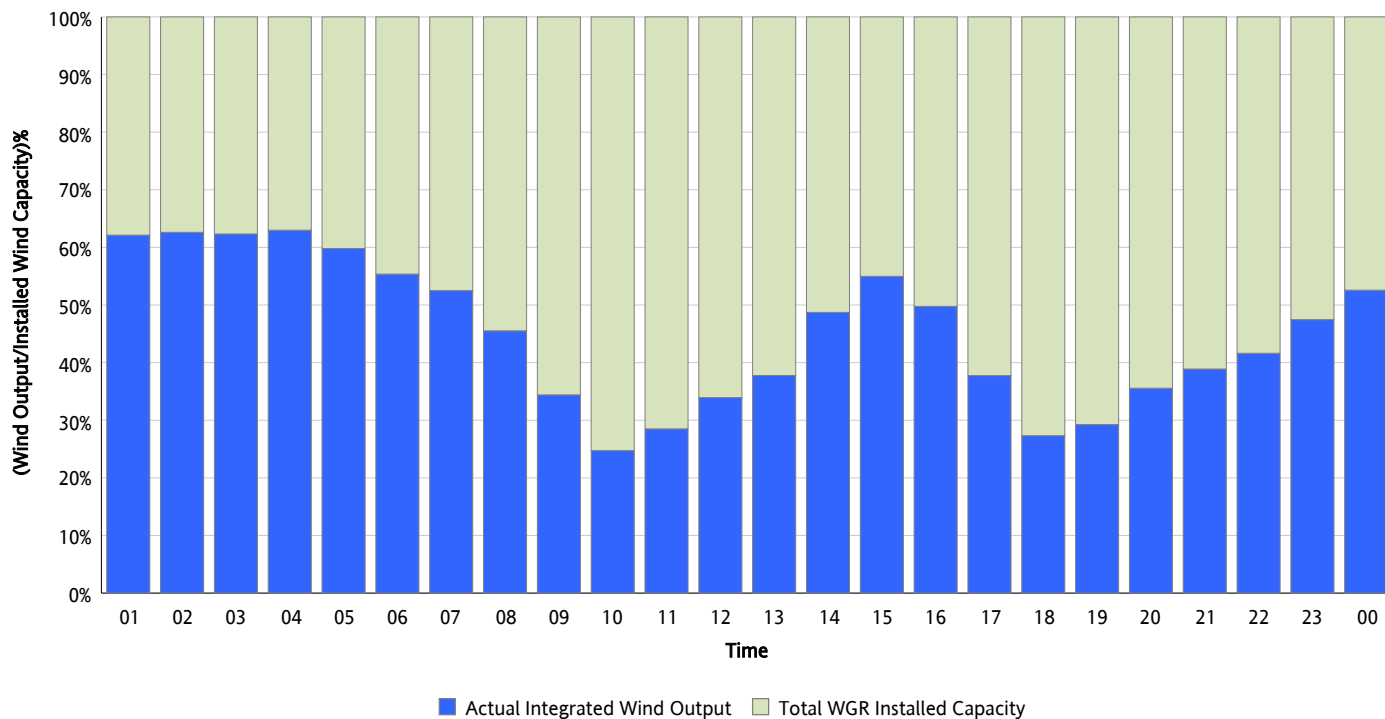
**Hourly Average Actual Load vs. Actual Wind Output**  
**12/17/2012**



*\* Wind Record and Wind Max represent instantaneous values and the rest of the values are integrated over the hour*

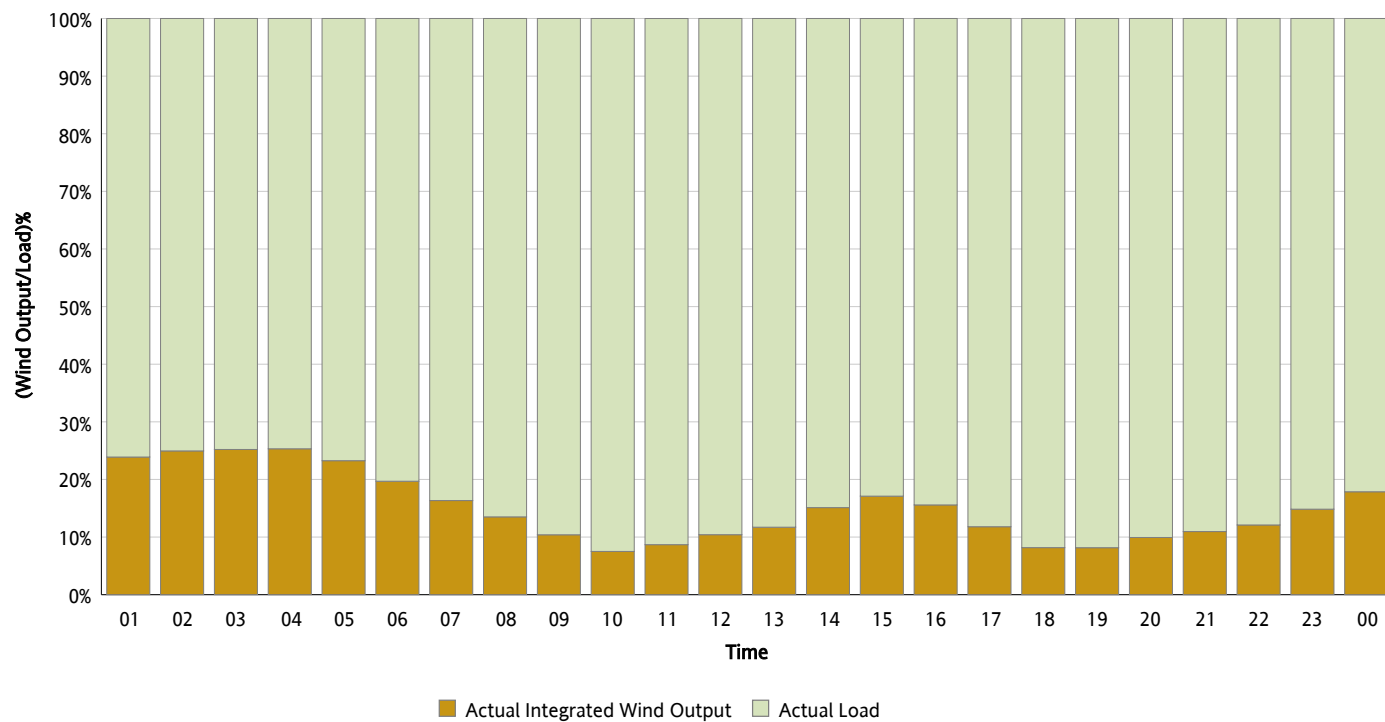
## Actual Wind Output as a Percentage of the Total Installed Wind Capacity

12/17/2012



## Actual Wind Output as a Percentage of the ERCOT Load

12/17/2012



## ERCOT Load vs. Actual Wind Output

12/10/2012 - 12/17/2012

